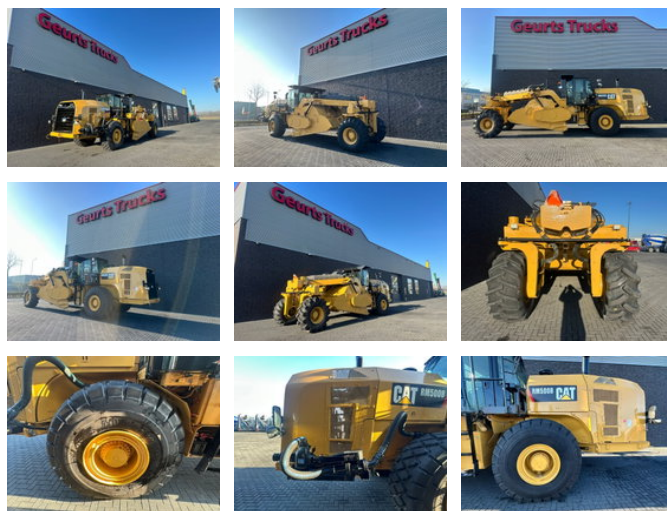




## Caterpillar RM 500 B

### Allgemeine Merkmale

Marke	Caterpillar
Unterkategorie	Bodenstabilisierer
Datum der Erstzulassung	07-01-2017
Angezeigte Öffnungszeiten	7500
Farbe	Gelb
Zustand	Gebraucht
Allgemeiner Zustand	Gut
Kraftstoff	Diesel
Referenz	1790560



### Eigenschaften

Ledig gewicht

29.500kg

# Caterpillar RM 500 B

## Technische Spezifikationen

Fahren	wheels
Vermögenswerte	552hp

---

## Beschreibung

Year FIRTS USE 2017 Manufacturer CATERPILLAR Model RM-500B Hours 7500 Serial Number CATRM500VMB900114  
Condition Used Operating Condition Operable Description Enclosed Cab, Air Conditioner, Rear View Camera, Water System, Tier 3 Final US EPA Label, Requires Diesel Exhaust Fluid, 96 in Universal Rotor, 20 in Cutting Depth, AutoLube System, 4x4 23.1-26 Tires (Good). Category Specific Reclamation Type Soil Stabilizer/Recycler Combo Operating Weight 62,611 lb Max Working Width 96 in Max Working Depth 20 in Max Working Speed 393.7 fpm Rotor Type Universal Rotor Rotation Type Up Cut Depth Control Yes Ground Clearance 19.9 in Water System Yes Sliding Operator Platform Yes Auto Lube Yes Camera Yes Chassis Tire % Remaining 100 Exterior ROPS Enclosed Auxiliary Lighting Yes Mirrors Yes Interior Heater Yes A/C Yes A/C Condition Excellent Powertrain Max Travel Speed 6.2 mph Drive 4WD Steer Modes Yes Engine Horsepower 546 HP Engine Manufacturer CATERPILLAR Engine Tier USA Tier 3 Shipping Dimensions Shipping Length 405 in Shipping Width 115 in Shipping Height 141 in Shipping Weight 62,611 lb

## Zubehör