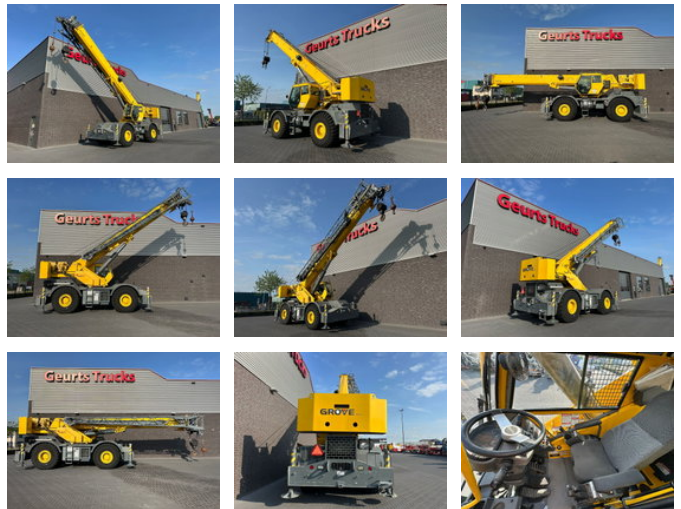




Grove RT765E-2 ROUGH TERRAIN CRANE + JIB + 2 X WINCH

Allgemeine Merkmale

Marke	Grove
Unterkategorie	Geländekran
Datum der Erstzulassung	02-01-2016
Farbe	Gelb
Zustand	Gebraucht
Allgemeiner Zustand	Sehr gut
Kraftstoff	Diesel
Referenz	235130



Eigenschaften

Belastbarkeit	65.000kg
Zulässiges Gesamtgewicht	42.388kg
Seriennummer	235130
Maximale Hubkraft	65.000kg
Hubhöhe	5.800cm
Masttyp	Teleskopisch

Grove RT765E-2 ROUGH TERRAIN CRANE + JIB + 2 X WINCH

Technische Spezifikationen

Fahren

wheels

Beschreibung

GROVE RT 765E-2 ROUGH TERRAIN CRANE + JIB + 2 X WINCH MAX LIFT CAPACITY 65 TONN Superstructure Boom 11 m – 33,5 m, four-section, full-power sequenced synchronized boom. Maximum tip height: 36,4 m. *Fixed swingaway extension 10,1 m offsettable lattice swingaway extension. Offsets 0°, 25° and 45°. Stows alongside base boom section. Maximum tip height: 45,8 m. *Bifold swingaway extension 10,1 m - 17,1 m bifold lattice swingaway extension. Offsettable at 0°, 25° and 45°. Stows alongside base boom section. Maximum tip height: 52,8 m. Boom elevation One double acting hydraulic cylinder with integral holding valve provides elevation from -3° to +78°. Load moment and anti-two block system Standard "Graphic Display" load moment and anti-two block system with audio-visual warning and control lever lockout. These systems provide electronic display of boom angle, length, radius, tip height, relative load moment, maximum permissible load, load indication and warning of impending two-block condition. The standard Work Area Definition System allows the operator to pre-select and define safe working areas. If the crane approaches the pre-set limits, audio-visual warnings aid the operator in avoiding job-site obstructions. Cab Full-vision, all-steel fabricated with acoustical lining and tinted safety glass throughout. Deluxe seat incorporates armrest-mounted hydraulic single-axis controllers. Dash panel incorporates gauges for all engine functions. Other standard features include: hot water heater, cab circulating air fan, sliding side and rear windows, sliding skylight with electric wiper and sunscreen, electric windshield wash/wipe, fire extinguisher and seat belt, air conditioning. Hoist Planetary reduction with automatic spring applied multi-disc wet brake. Grooved drum. Electronic hoist drum rotation indicators, and hoist drum cable followers. Maximum Single Line Pull: 8 246 kg. Maximum Permissible Line Pull: 7 620 kg with standard 6X37 class rope. 7 620 kg. with optional 35X7 class rope. Maximum Single Line Speed: 156 m/min. Rope Construction: 6X37 EIPS IWRC, 35x7 Flex-X, Rotation Resistant Rope Diameter: 19mm. Rope Length: Main Hoist: 152 m - Optional: 168 m. Maximum Rope Stowage: 256 m. Outriggers Four hydraulic telescoping single-stage double box beam outriggers with inverted jacks and integral holding valves. Three position setting, 0%, 50% and fully extended. All steel fabricated, quick release type outrigger floats, 610 mm diameter. Maximum outrigger pad load: 36 606 kg. Controls and crane level indicator located in cab. Engine Cummins QSB6.7 179 KW EPA Transmission Spicer powershift with 6 forward and 6 reverse speeds. Front axle disconnect for 4 x 2 travel. Drive/Steer 4 x 4. Fully independent power steering: Front: Full hydraulic steering wheel controlled. Rear: Full hydraulic switch controlled. Provides infinite variations of 4 main steering modes: front only, rear only,

Zubehör