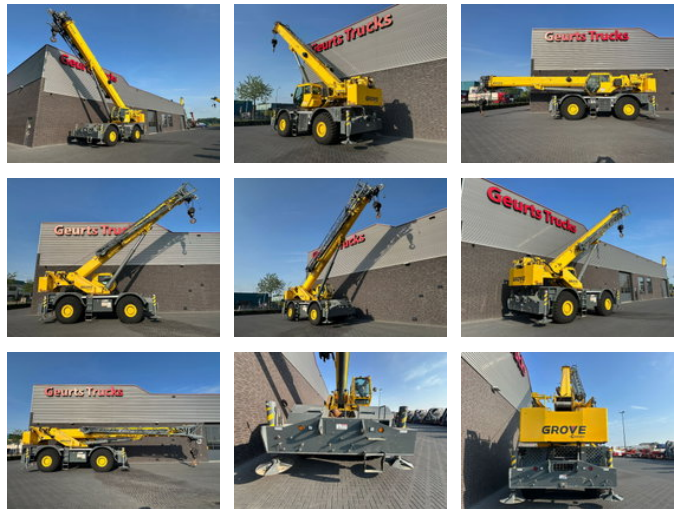




Grove RT880E ROUGH TERRAIN CRANE + JIB + 2 x WINCH

Allgemeine Merkmale

Marke	Grove
Unterkategorie	Geländekran
Datum der Erstzulassung	01-02-2016
Farbe	Gelb
Zustand	Gebraucht
Allgemeiner Zustand	Sehr gut
Kraftstoff	Diesel
Referenz	234908



Eigenschaften

Zulässiges Gesamtgewicht	49.588kg
Seriennummer	234908
Maximale Hubkraft	75.000kg
Hubhöhe	7.060cm
Masttyp	Teleskopisch

Grove RT880E ROUGH TERRAIN CRANE + JIB + 2 x WINCH

Technische Spezifikationen

Fahren	wheels
Vermögenswerte	205kw

Beschreibung

GROVE RT880E ROUGH TERRAIN CRANE + JIB + 2 x WINCH 1ST USE IN 2016 Capacity: 80t 8165 kg (18,000 lb) hydraulic removable counterweight • Grove MEGAFORM™ Boom 12,6 m - 39,0 m (41 ft - 128 ft) four section, sequenced synchronized full power boom. Maximum tip height: 41,9 m (138 ft). Lattice extension 10,0 m - 17 m (33 ft - 56 ft) offsettable bi-fold lattice swingaway extension. Offsets 0°, 20°, and 40°. Stows alongside base boom section. Maximum tip height: 58,6 m (192 ft). Counterweight 8165 kg (18,000 lb). Hydraulically installed and removed. Hoist specifications (HP30-19G) main and auxiliary hoist Planetary reduction with automatic spring applied multi-disc wet brake. Electronic hoist drum rotation indicators and hoist drum cable followers. Maximum single line pull: 1st layers: 9185 kg (20,250 lb) 3rd layer: 7715 kg (17,010 lb) 5th layer: 6650 kg (14,660 lb) Maximum permissible line pull: 7620 kg (16,800 lb) with 6 x 37 class rope 7620 kg (16,800 lb) with 35 x 7 class rope Maximum single line speed: 156 m/ min (514 fpm) Rope construction: 6 x 36 EIPS IWRC, Special Flexible 35 x 7 Flex-X, Rotation Resistant Rope diameter: 19 mm (3/4 in) Rope length: Main hoist: 182,8 m (600 ft) Auxiliary hoist: 182,8 m (600 ft) Maximum rope stowage: 256 m (841 ft) Engine (Tier IV) Cummins QSB 6.7L diesel, six-cylinder, turbo-charged. 205 kW (275 bhp) at 2500 rpm. Meets emission requirements per U.S. E.P.A., Tier IV and E.U. Stage III B. Maximum torque: 992 Nm (732 ft lb) at 1500 rpm. Fuel requirement: Minimum of 15 ppm sulphur content (Ultra Low Sulphur Diesel). Transmission Full rangeshift with 6 forward and 6 reverse speeds. Front axle disconnect for 4 x 2 travel. Drive 4 x 4 Steering Fully independent power steering: Front: Full hydraulic, steering wheel controlled. Rear: Full hydraulic, switch controlled. Provides infinite variations of 4 main steering modes: front only, rear only, crab and coordinated. Rear steer indicator. Turning radius - 25 ft. Brakes Full hydraulic split circuit brakes operating on all wheels. Spring-applied, hydraulically released parking brake mounted on front axle.

Zubehör