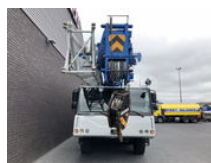
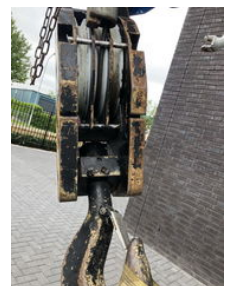




## Liebherr LTM 1095 5.1 KRAAN/KRAN/CRANE/GRUA

### Allgemeine Merkmale

Marke	Liebherr
Unterkategorie	Anderer Kran
Kilometerstand	101.066km
Baujahr	2009
Abgelesene Betriebsstunden	6449
Farbe	Weiß
Zustand	Gebraucht
Allgemeinzustand	Sehr gut
Kraftstoff	Diesel
Referenz	1788562
CE markierung	Ja



### Eigenschaften

Hubkapazität	95.000kg
Masttyp	Teleskopisch

# Liebherr LTM 1095 5.1 KRAAN/KRAN/CRANE/GRUA

## Technische Spezifikationen

Antrieb	wheels
---------	--------

---

Motorleistung	370kw
---------------	-------

## Beschreibung

LIEBHERR LTM 1095 5.1 Max. load capacity 95 t at radius 3.00 m Telescopic boom from 12.50 m Telescopic boom up to 58.00 m Lattice jib from 10.5 m Lattice jib up to 26.0 m Drive engine/make Liebherr Drive engine 6-Zylinder-Diesel Drive engine/power 370 kW Number of axles 5 Crane engine/make Liebherr Crane engine 4-Zylinder-Diesel Crane engine/power 129 kW Drive/Steering option 10 x 8 x 10 Driving speed 85.00 km/h Total ballast 23.00 t UNDERCARRIAGE: 6512 HOURS 101066 KM UPPER CARRIAGE: 8556 HOURS NICE AND STRAIGHT CRANE WIR SPRECHEN DEUTSCH WE SPEAK ENGLISH HABLAMOS ESPANOL Geurts Trucks' general terms and conditions apply to all offers, quotations and agreements. All agreements with Geurts Trucks are governed by the law of the Netherlands and the Oost-Brabant Court, located in 's-Hertogenbosch, has exclusive jurisdiction to take cognizance of any disputes. You can find the full text of our general terms and conditions on our website: <https://www.geurtstrucks.com/terms-and-conditions>

## Zubehör