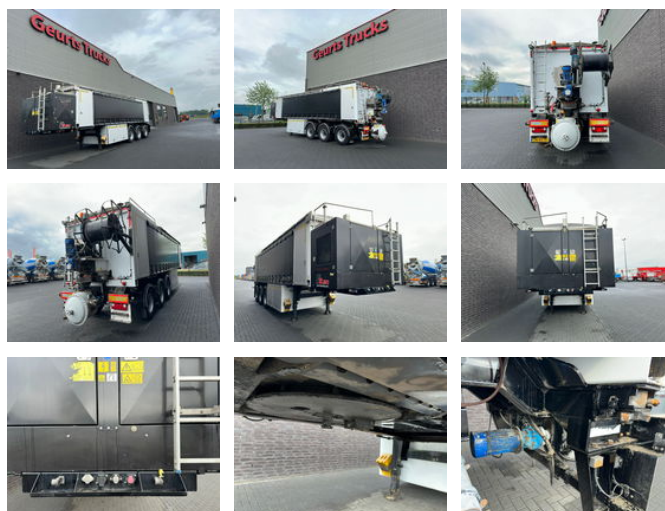




# Bremat F3.20 CEMENTDEKVLOER TRAILER/CHAPE/MORTEL/SCREEDPUMPS

## Características generales

Marca	Bremat
Subcategoría	Bomba de hormigón
Placa de matrícula	ON-89-TF
Año de construcción	2015
Fecha del primer registro	05-05-2015
Color	Negro
Condición	Usado
Condición general	Muy bien
Referencia	1790114



## Características

Peso vacío	13.175kg
payloadWeight	31.825kg
GWV	45.000kg
Longitud	1.224cm
Ancho	255cm
Número de serie	0116

# Bremat F3.20 CEMENTDEKVLOER TRAILER/CHAPE/MORTEL/SCREEDPUMPS

## Especificaciones técnicas

Número de ejes

3

## Descripción

BREMAT F3.20 CEMENT SCREED TRAILER HRD TRAILER WITH BREMAT F3.20 CEMENT SCREED SETUP 3 AXLES 2X STEERING AXLES 1X LIFT AXEL BPW ECO PLUS AXLES AIRSUSPENSION 2X REMOTE CONTROL BREMAT F3.20 Diesel Engine John Deere 4045TF290a, 5 cylinders Power: 56 kW (75 hp) at 2,400 rpm Fuel Tank Capacity: 490 L Compressor: 5,600 l/Min, 9 bar Generator: 19 kVA, 15 kW, 3,000 rpm Floor Mortar Pumping Capacity: Up to 6 m<sup>3</sup>/hour Mixer Kettle: 220 L Total Installation Length: 12,185 mm Sand Compartment Capacity: 20.0 m<sup>3</sup> Cement Compartment Capacity: 6.0 m<sup>3</sup> Water Tank Capacity: 200 L Empty Weight: 13,175 kg IMMEDIATELY AVAILABLE !!! WWW.GEURTSTRUCKS.COM FOLLOW OUR INSTAGRAM, FACEBOOK AND TIKTOK TO WATCH OUR VIDEOS FROM OUR TRUCKS AND EQUIPMENT THAT WE HAVE FOR SALE WIR SPRECHEN DEUTSCH WE SPEAK ENGLISH HABLAMOS ESPANOL Geurts Trucks' general terms and conditions apply to all offers, quotations and agreements. All agreements with Geurts Trucks are governed by the law of the Netherlands and the Oost-Brabant Court, located in 's-Hertogenbosch, has exclusive jurisdiction to take cognizance of any disputes. You can find the full text of our general terms and conditions on our website: <https://www.geurtstrucks.com/terms-and-conditions>

## Accesorios

- ABS
- Suspensión neumática
- Lift axle
-