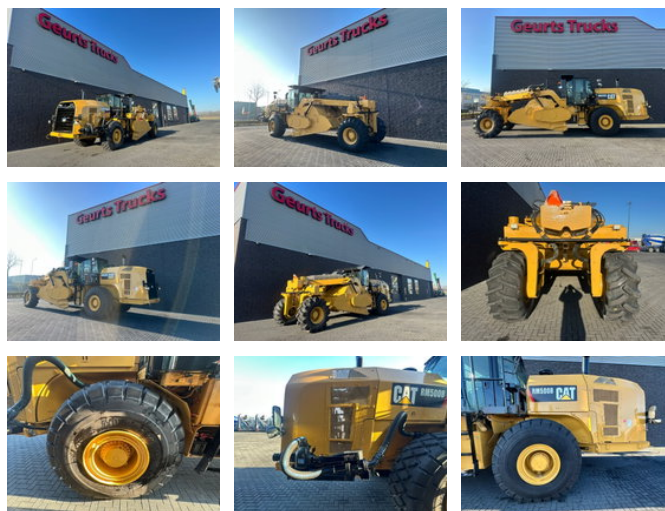




Caterpillar RM 500 B

Características generales

Marca	Caterpillar
Subcategoría	Estabilizador de suelo
Fecha de primera inscripción	07-01-2017
Horario mostrado	7500
Color	Amarillo
Condición	Usado
Estado general	Bien
Combustible	Diesel
Referencia	1790560



Propiedades

Peso individual

29.500kg

Caterpillar RM 500 B

Especificaciones técnicas

Conducir	wheels
Activos	552hp

Descripción

Year FIRTS USE 2017 Manufacturer CATERPILLAR Model RM-500B Hours 7500 Serial Number CATRM500VMB900114
Condition Used Operating Condition Operable Description Enclosed Cab, Air Conditioner, Rear View Camera, Water System, Tier 3 Final US EPA Label, Requires Diesel Exhaust Fluid, 96 in Universal Rotor, 20 in Cutting Depth, AutoLube System, 4x4 23.1-26 Tires (Good). Category Specific Reclamation Type Soil Stabilizer/Recycler Combo Operating Weight 62,611 lb Max Working Width 96 in Max Working Depth 20 in Max Working Speed 393.7 fpm Rotor Type Universal Rotor Rotation Type Up Cut Depth Control Yes Ground Clearance 19.9 in Water System Yes Sliding Operator Platform Yes Auto Lube Yes Camera Yes Chassis Tire % Remaining 100 Exterior ROPS Enclosed Auxiliary Lighting Yes Mirrors Yes Interior Heater Yes A/C Yes A/C Condition Excellent Powertrain Max Travel Speed 6.2 mph Drive 4WD Steer Modes Yes Engine Horsepower 546 HP Engine Manufacturer CATERPILLAR Engine Tier USA Tier 3 Shipping Dimensions Shipping Length 405 in Shipping Width 115 in Shipping Height 141 in Shipping Weight 62,611 lb

Accesorios