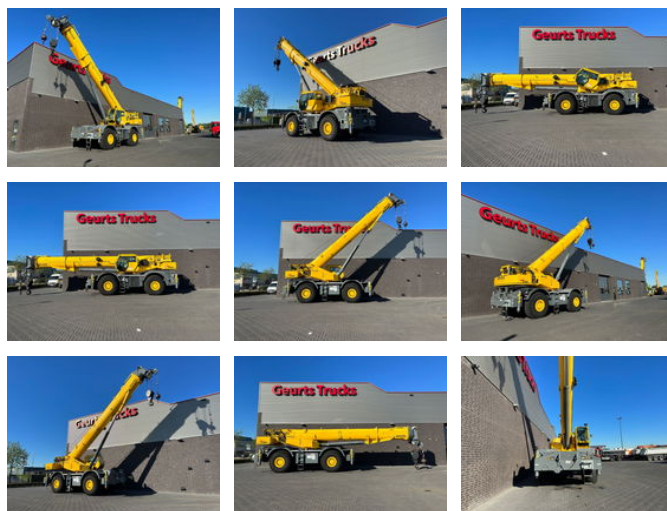




Grove GRT8100 ROUGH TERRAIN CRANE

Características generales

Marca	Grove
Subcategoría	Todoterreno
Fecha del primer registro	05-06-2018
Color	Amarillo
Condición	Usado
Condición general	Muy bien
Combustible	Diesel
Referencia	1789850



Características

Peso vacío	54.073kg
Número de serie	802
Máx. capacidad de levantamiento	100.000kg
liftingHeight	5.000cm
mastType	Teléscopico

Grove GRT8100 ROUGH TERRAIN CRANE

Especificaciones técnicas

Tracción

wheels

Descripción

GROVE GRT8100 ROUGH TERRAIN CRANE 100T lifting capacity 12 - 47 Mtr. five section boom, max. tip height 50 Mtr. 5 sheave hook block 81,5 Ton/12 Ton overhaul ball main & aux. 2x Winch, 4 hydr. telescopic outriggers, Manitowoc LMI and anti-two block system, 12,247 Kg counterweight hydr. removable, 29.5-25 tyres 85% remaining, CraneSTAR system. 6 cylinder turbocharged Cummins QSB6.7 engine with 275HP (205kW), EPA Compliant 6F-6R powershift transmission 4x4x4 configuration hydraulic tilt cab with A/C, CRANE HAVE ONLY 3415 WORKING HOURS !!!!! WE CAN SHIP WORLDWIDE!!!! WWW.GEURTSTRUCKS.COM FOLLOW OUR INSTAGRAM, FACEBOOK AND TIKTOK TO WATCH OUR VIDEOS FROM OUR TRUCKS AND EQUIPMENT THAT IS FOR SALE WIR SPRECHEN DEUTSCH WE SPEAK ENGLISH HABLAMOS ESPANOL Geurts Trucks' general terms and conditions apply to all offers, quotations and agreements. All agreements with Geurts Trucks are governed by the law of the Netherlands and the Oost-Brabant Court, located in 's-Hertogenbosch, has exclusive jurisdiction to take cognizance of any disputes. You can find the full text of our general terms and conditions on our website: <https://www.geurtstrucks.com/terms-and-conditions>

Accesorios