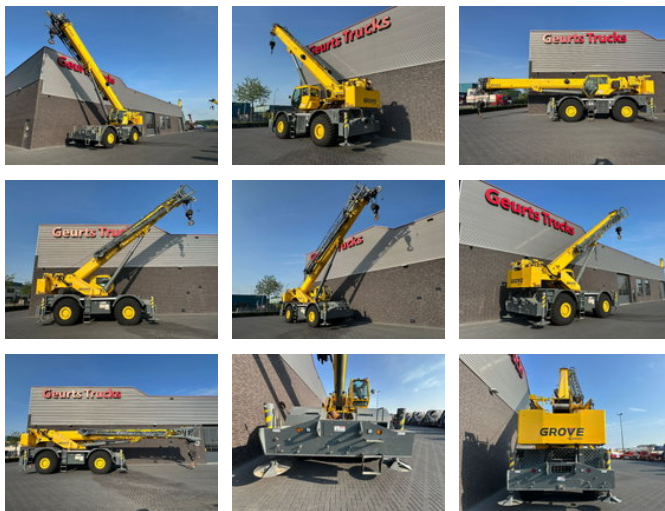




## Grove RT880E ROUGH TERRAIN CRANE + JIB + 2 x WINCH

### Características generales

Marca	Grove
Subcategoría	Todoterreno
Fecha de primera inscripción	01-02-2016
Color	Amarillo
Condición	Usado
Estado general	Muy bien
Combustible	Diesel
Referencia	234908



### Propiedades

Peso bruto vehicular	49.588kg
Número de serie	234908
Capacidad máxima de elevación	75.000kg
Altura de elevación	7.060cm
Tipo de mástil	Telescópico

# Grove RT880E ROUGH TERRAIN CRANE + JIB + 2 x WINCH

## Especificaciones técnicas

Conducir	wheels
Activos	205kw

## Descripción

GROVE RT880E ROUGH TERRAIN CRANE + JIB + 2 x WINCH 1ST USE IN 2016 Capacity: 80t 8165 kg (18,000 lb) hydraulic removable counterweight • Grove MEGAFORM™ Boom 12,6 m - 39,0 m (41 ft - 128 ft ) four section, sequenced synchronized full power boom. Maximum tip height: 41,9 m (138 ft). Lattice extension 10,0 m - 17 m (33 ft - 56 ft) offsettable bi-fold lattice swingaway extension. Offsets 0°, 20°, and 40°. Stows alongside base boom section. Maximum tip height: 58,6 m (192 ft). Counterweight 8165 kg (18,000 lb). Hydraulically installed and removed. Hoist specifications (HP30-19G) main and auxiliary hoist Planetary reduction with automatic spring applied multi-disc wet brake. Electronic hoist drum rotation indicators and hoist drum cable followers. Maximum single line pull: 1st layers: 9185 kg (20,250 lb) 3rd layer: 7715 kg (17,010 lb) 5th layer: 6650 kg (14,660 lb) Maximum permissible line pull: 7620 kg (16,800 lb) with 6 x 37 class rope 7620 kg (16,800 lb) with 35 x 7 class rope Maximum single line speed: 156 m/ min (514 fpm) Rope construction: 6 x 36 EIPS IWRC, Special Flexible 35 x 7 Flex-X, Rotation Resistant Rope diameter: 19 mm (3/4 in) Rope length: Main hoist: 182,8 m (600 ft) Auxiliary hoist: 182,8 m (600 ft) Maximum rope stowage: 256 m (841 ft) Engine (Tier IV) Cummins QSB 6.7L diesel, six-cylinder, turbo-charged. 205 kW (275 bhp) at 2500 rpm. Meets emission requirements per U.S. E.P.A., Tier IV and E.U. Stage III B. Maximum torque: 992 Nm (732 ft lb) at 1500 rpm. Fuel requirement: Minimum of 15 ppm sulphur content (Ultra Low Sulphur Diesel). Transmission Full rangeshift with 6 forward and 6 reverse speeds. Front axle disconnect for 4 x 2 travel. Drive 4 x 4 Steering Fully independent power steering: Front: Full hydraulic, steering wheel controlled. Rear: Full hydraulic, switch controlled. Provides infinite variations of 4 main steering modes: front only, rear only, crab and coordinated. Rear steer indicator. Turning radius - 25 ft. Brakes Full hydraulic split circuit brakes operating on all wheels. Spring-applied, hydraulically released parking brake mounted on front axle.

## Accesorios