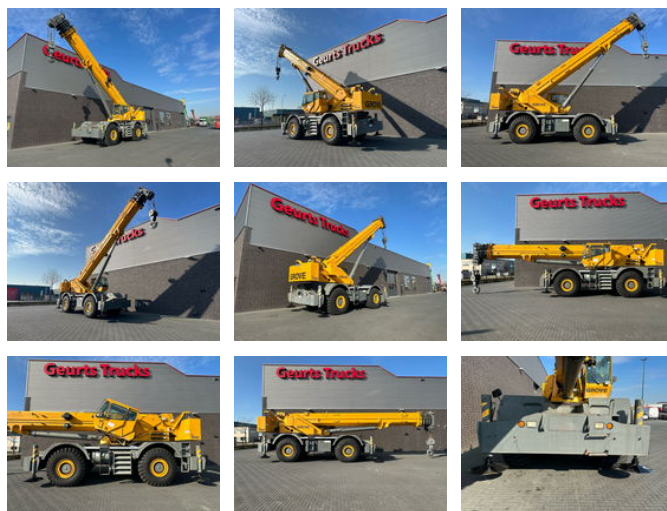




Grove RT890E ROUGH TERRAIN CRANE, CE-markering

Características generales

Marca	Grove
Subcategoría	Todoterreno
Año de construcción	2008
Color	Amarillo
Condición	Usado
Condición general	Muy bien
Combustible	Diesel
Referencia	229976
ceMarking	Sí



Características

Peso vacío	52.605kg
Número de serie	229976
Máx. capacidad de levantamiento	81.646kg
liftingHeight	4.300cm
mastType	Teléscopico

Grove RT890E ROUGH TERRAIN CRANE, CE-markering

Especificaciones técnicas

Tracción

wheels

Descripción

GROVE RT 890E + 4X4 CRANE FIRST REG 2008 Dimensions: Boom Min Height @ Max Raise Angle 11.59m Max Height @ Max Raise Angle - No Jib 43.29m lattice extension 10m - 17m offsettable bifold lattice swingaway extension offsets 0gr ,20gr and 40gr. stows along side base boom section. maximum top height with jib 62.7m. Min Operating Radius 3.05m Max Elevating Angle 78degrees Max Operating Radius 38.1m Number Of Sections 5 Max Lift Capacity 81646.64kg Swing Speed 2rpm Transport Length 13979mm Transport Width 3340mm Transport Height 3758mm Wheelbase 4216mm Ground Clearance 337mm Width W/ Outriggers Extended 7315mm Carrier/Base Length 8569m Specifications: Engine umber Of Cylinders 6 Engine Make Cummins Gross Power 205kw EPA Power Measured @ 2500rpm Max Torque 987Nm Torque Measured @ 1500rpm Displacement 6.7L Aspiration turbocharged Operational: Operating Weight 52605.9kg Fuel Capacity 273L Hydraulic System Fluid Capacity 995L Operating Voltage 12V Tire Size 29.5x25 Transmission: Transmission Type full rangeshift Number Of Forward Gears 6 Number Of Reverse Gears 6 Max Speed - Forward 35km/h Max Speed - Reverse 35km/h PAT SYSTEM 2 WINCH 5 SHEAVE HOOKBLOCK 1 HEADACHE BALL HYDRAULIC TILTING CABIN FIRST REG. 2008 WIR SPRECHEN DEUTSCH WE SPEAK ENGLISH HABLAMOS ESPANOL

Accesorios