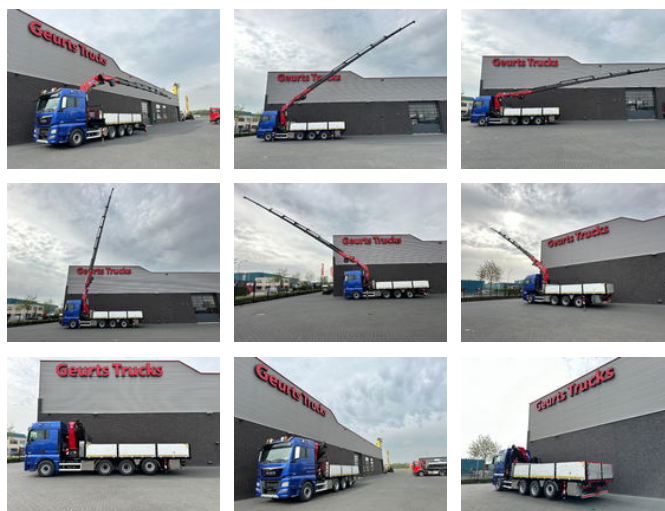




# MAN TGX 33.560 8X4 TRIDEM + HMF 4020-K8 KRAAN/KRAN/ CRANE/GRUA

## Características generales

Marca	MAN
Modelo	TGX 33.560
Subcategoría	Camión grúa
Lectura del odómetro	359.565km
Fecha del primer registro	09-03-2017
Color	Azul
Condición	Usado
Condición general	Muy bien
Combustible	Diesel
Clase de emisión	Euro 6
Referencia	1789853
ceMarking	Sí



## Características

Número de serie	8163
Máx. capacidad de levantamiento	7.180kg
liftingHeight	2.510cm
mastType	Teléscopico

# MAN TGX 33.560 8X4 TRIDEM + HMF 4020-K8 KRAAN/KRAN/ CRANE/GRUA

## Especificaciones técnicas

Número de ejes	4
Configuración de ejes	8x4
Transmisión	Automático

## Descripción

MAN TGX 33.560 8X4 TRIDEM + HMF 4020-K8 CRANE EURO 6 L PAKKET 560 HP TRACTION 8X4 TRIDEM LAST AXEL LIFT AND STEERING AIRSUSPENSION WHEELBASE 360 CM AUTOMATIC GEARBOX WITH ENGINEBRAKE TGX SLEEP CAB WITH AIRCO NAVI LETHER FRIDGE OPEN LOADING PLATFORM WITH REMOVABLE ALUMINUM SIDE BOARDS HOOKEYES RONGPOTS TOOLBOXES LOADING PLATFORM LENGTH 650 CM HMF 4020 K-8 CRANE 8X HYDRAULIC EXTENDABLE RADIO REMOTE CONTROL OIL COOLER FOR CRANE HYDRAULIC MAX WORKING HIGH 25.1 METER MAX LIFTING CAPACITY 7180 KG MAX LIFTING CAPACITY ON 21.3 METER 1010 KG 4X STABILZERS 5th AND 6th FUNCTION  
WWW.GEURTSTRUCKS.COM FOLLOW OUR INSTAGRAM: GEURTSTRUCKS WIR SPRECHEN DEUTSCH WE SPEAK ENGLISH HABLAMOS ESPANOL Geurts Trucks' general terms and conditions apply to all offers, quotations and agreements. All agreements with Geurts Trucks are governed by the law of the Netherlands and the Oost-Brabant Court, located in 's-Hertogenbosch, has exclusive jurisdiction to take cognizance of any disputes. You can find the full text of our general terms and conditions on our website: <https://www.geurtstrucks.com/terms-and-conditions>

## Accesorios