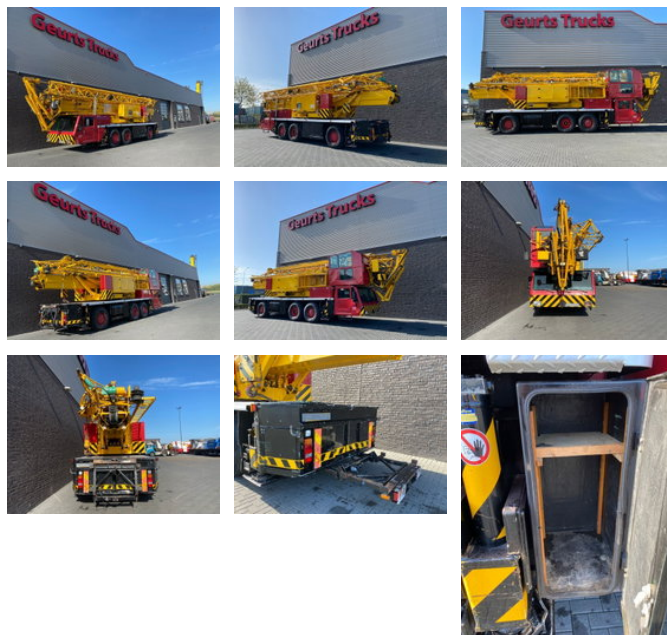




Spierings SK377-AT3 MOBIELE TORENKRAAN/TURMKRANE/ TOWERCRANE

Características generales

Marca	Spierings
Subcategoría	Torre móvil
Lectura del contador	186.419km
Fecha de primera inscripción	26-03-2007
Color	Rojo
Condición	Usado
Estado general	Muy bien
Combustible	Diesel
Referencia	1789567
Marcado CE	Y



Propiedades

Peso individual	35.750kg
Capacidad de carga	250kg
Peso bruto vehicular	36.000kg
Longitud	1.345cm

Ancho	260cm
Capacidad del cilindro	9.186cc
Tipo de mástil	Telescópico

Spierings SK377-AT3 MOBIELE TORENKRAAN/TURMKRANE/ TOWERCRANE

Especificaciones técnicas

Conducir

wheels

Descripción

SPIERINGS SK377-AT3 TOWERCRANE UNDERCARRIAGE: EURO 4 DRIVE 6X4 MANUAL GEARBOX KILOMETERS 186419
MAX SPEED 85 KM/H TOTAL 3 AXELS DAF ENGINE 360 HP 265 KW TIRES: 445/75 R 22.5 CAMERA CENTRAL GREASING
SYTEEM UPPER CARRIAGE: WORKING HOURS 15000 MAX LIFTHING CAPACITY 7500 KG AT 10.4 METERS MAX LIFTHING
AT 33 METERS 1900 KG HORIZONTAL WORKING HEIGHT 19.8 METERS MAX WORKING HEIGHT 36 M 30GR TOWER
HEIGHT 22 METER 4X OUTRIGGER PLATES CAMARA ON THE MAST CENTRAL GREASING SYTEEM RADIOGRAPHIC
CONTROL FULL COUNTERWEIGHT ALL BOOKS DOCUMENTS AND CERTIFICATES AVAILABLE DUTCH CRANE AVAILABLE
IMMEDIATELY. WWW.GEURTSTRUCKS.COM FOLLOW OUR INSTAGRAM: GEURTSTRUCKS WIR SPRECHEN DEUTSCH WE
SPEAK ENGLISH HABLAMOS ESPANOL Geurts Trucks' general terms and conditions apply to all offers, quotations and
agreements. All agreements with Geurts Trucks are governed by the law of the Netherlands and the Oost-Brabant Court, located in
's-Hertogenbosch, has exclusive jurisdiction to take cognizance of any disputes. You can find the full text of our general terms and
conditions on our website: <https://www.geurtstrucks.com/terms-and-conditions>

Accesorios