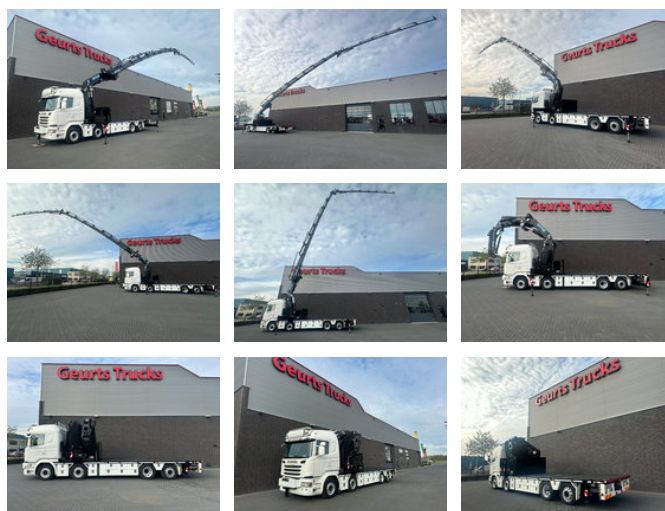




Scania G490 LB8X2*6HNB MET EFFER 955/8S +JIB 6S KRAAN / KRAN / CRANE / GRUA

General features

Brand	Scania
Model	G490
Subcategory	Crane truck
Odometer reading	242.362km
Date of first registration	13-09-2016
Color	White
Condition	Used
General condition	Very good
Fuel	Diesel
Emission class	Euro 6
Reference	425431
CE marking	Yes



Characteristics

Empty weight	25.800kg
Load capacity	10.198kg
GVW	36.000kg
Serial number	YS2G8X20005425431
Lifting capacity	26.200kg
Lifting height	3.800cm

Mast type

Telescope

Scania G490 LB8X2*6HNB MET EFFER 955/8S +JIB 6S KRAAN / KRAN / CRANE / GRUA

Technical specifications

Number of axes	4
Axis configuration	8x2
Transmission	Automatic
Engine output	360kw

Description

SCANIA G490 LB8X2*6HNB WITH EFFER 955/8S +JIB 6S CRANE + WINCH EURO 6 L PAKKET 490 HP TRACTION 8X2*6HNB LAST AXEL IS LIFT AND STEERING AXEL FULL AIRSUSPENSION WHEELBASE 610 CM CG19H SLEEP CAB WITH FULL OPTIONS AIRCO HEATER NAVI CAMERA FRIDGE CAMERA TV OPTIECRUISE AUTOMATIC GEARBOX TRAILER COUPLING LOTS OF TOOLBOXES !!! LOADING PLATFORM LENGTH 625 CM + 300 CM HYDRAULIC EXTENDABLE IS TOTAL 925 CM LONG HOOKEYES + RONGPOTS + TWISTLOCKS EFFER 955/8S +JIB 6S + WINCH OIL COOLER FOR CRANE HYDRAULICS 14X HYDRAULIC EXTENDABLE TOTAL WORKING HEIGHT 38 METRES !! MAX LIFT CAPACITY AT 2,50M = 26200 KG MAX LIFT AT 33,55 METRES 720 KG CRANE CAN WORK IN FRONT OF CABIN THROUGH 1X FRONT OUTRIGGER 100 % EXTRA CHASSIS REINFORCEMENT TOTAL 5X OUTRIGGERS LARGE HYDRAULIC WINCH WITH ATTACHMENTS HOOKS AND ROLLERS REMOTE CONTROL

Accessories

- Anti-lock braking system
- Reversing camera
- Air conditioning
- Aluminium fuel tank
- Central locking
- Central lubrication
- Cruise control
- Electrically operated windows
- Toolbox
- Refrigerator
- Alloy wheels
- Air suspension
- Fog lights
- Navigation system
- PTO
- Particulate filter
- Sleeper cab
- Speed limiter
- Vehicle heater
- Coupling
- Heavy duty engine brake
- Spotlights

- Visor
- Electrically adjustable door mirrors
-