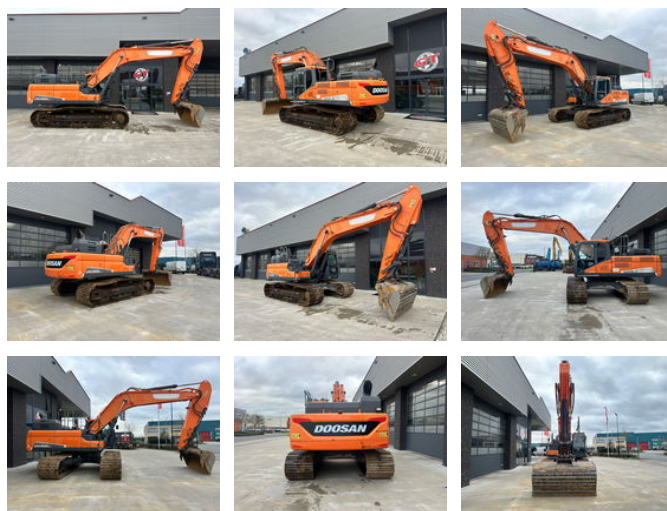




Doosan DOOSAN DX 300 LC

Algemene kenmerken

Merk	Doosan
Subcategorie	Rupsgraafmachine
Bouwjaar	2015
Afgelezen urenstand	13950
Kleur	Oranje
Conditie	Gebruikt
Algemene staat	Goed
Brandstof	Diesel
Referentie	1790202



Doosan DOOSAN DX 300 LC

Technische specificaties

Vermogen

147kw

Omschrijving

Dimensions Boom/Stick Option (Hex) 1 A Shipping Length Of Unit 10740mm C Shipping Height Of Unit 3475mm I Max Cutting Height 9970mm J Max Loading Height 6930mm K Max Reach Along Ground 9965mm L Max Vertical Wall Digging Depth 5405mm M Max Digging Depth 6760mm Boom/Stick Option (Hex) 1 Boom 20'6" (6245mm)/Stick 8'2" (2500mm) Boom/Stick Option (Hex) 2 A Shipping Length Of Unit 10620mm I Max Cutting Height 10330mm C Shipping Height Of Unit 3345mm J Max Loading Height 7260mm K Max Reach Along Ground 10550mm L Max Vertical Wall Digging Depth 6190mm M Max Digging Depth 7360mm Boom/Stick Option (Hex) 2 Boom 20'6" (6245mm)/Stick 10'2" (3100mm) Boom/Stick Option (Hex) 3 A Shipping Length Of Unit 10660mm I Max Cutting Height 10410mm J Max Loading Height 7365mm C Shipping Height Of Unit 3475mm K Max Reach Along Ground 11085mm L Max Vertical Wall Digging Depth 6670mm M Max Digging Depth 8010mm Boom/Stick Option (Hex) 3 Boom 20'6" (6245mm)/Stick 12'4" (3750mm) Boom/Stick Option (Hex) 4 A Shipping Length Of Unit 14370mm C Shipping Height Of Unit 3455mm I Max Cutting Height 14155mm J Max Loading Height 11930mm K Max Reach Along Ground 17405mm M Max Digging Depth 13875mm Max Vertical Wall Dig Depth 11630mm Boom/Stick Option (Hex) 4 Boom 32'10" (10000mm)/Stick 22'11" (7000mm) Dimensions E Ground Clearance 500mm G Height To Top Of Cab 3065mm B Width To Outside Of Tracks 3200mm D Length Of Track On Ground 4010mm H Tail Swing Radius 3200mm Removal Counterweight Clearance 1175mm Undercarriage N Shoe Size 600mm Number Of Carrier Rollers Per Side 2 Ground Pressure 55.85kPa Max Travel Speed 5.1km/h Number Of Shoes Per Side 48 Number Of Track Rollers Per Side 9 Specifications Engine Number Of Cylinders 6 Engine Make 2252 Engine Model DL08 Net Power 147kw Power Measured @ 1900rpm Max Torque 911Nm Displacement 7.7L Aspiration turbocharged with air to air intercooler Torque Measured @ 1300rpm Operational Operating Weight 29299.4kg Fuel Capacity 500L Cooling System Fluid Capacity 35L Hydraulic System Fluid Capacity 330L Operating Voltage 24V Engine Oil Capacity 36L Swing Drive Fluid Capacity 6L Alternator Supplied Amperage 50amps Hydraulic System Relief Valve Pressure 32400kPa Hydraulic Pump Flow Capacity 494L/min Swing Mechanism Swing Speed 9.9rpm Buckets Reference Bucket Capacity 0.7m³ Minimum Bucket Capacity 0.7m³ Maximum Bucket Capacity 1.8m³

Accessoires