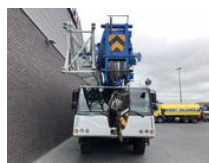
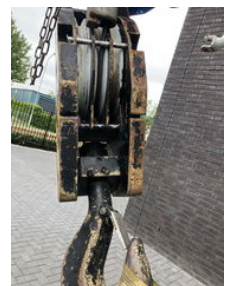




## Liebherr LTM 1095 5.1 KRAAN/KRAN/CRANE/GRUA

### Algemene kenmerken

Merk	Liebherr
Subcategorie	Overige kranen
Tellerstand	101.066km
Bouwjaar	2009
Afgelezen urenstand	6449
Kleur	Wit
Conditie	Gebruikt
Algemene staat	Erg goed
Brandstof	Diesel
Referentie	1788562
CE markering	Ja



### Eigenschappen

Max. hefcapaciteit	95.000kg
Mast type	Telescopisch

# Liebherr LTM 1095 5.1 KRAAN/KRAN/CRANE/GRUA

## Technische specificaties

Aandrijving	wheels
-------------	--------

Vermogen	370kw
----------	-------

## Omschrijving

LIEBHERR LTM 1095 5.1 Max. load capacity 95 t at radius 3.00 m Telescopic boom from 12.50 m Telescopic boom up to 58.00 m Lattice jib from 10.5 m Lattice jib up to 26.0 m Drive engine/make Liebherr Drive engine 6-Zylinder-Diesel Drive engine/power 370 kW Number of axles 5 Crane engine/make Liebherr Crane engine 4-Zylinder-Diesel Crane engine/power 129 kW Drive/Steering option 10 x 8 x 10 Driving speed 85.00 km/h Total ballast 23.00 t UNDERCARRIAGE: 6512 HOURS 101066 KM UPPER CARRIAGE: 8556 HOURS NICE AND STRAIGHT CRANE WIR SPRECHEN DEUTSCH WE SPEAK ENGLISH HABLAMOS ESPANOL Geurts Trucks' general terms and conditions apply to all offers, quotations and agreements. All agreements with Geurts Trucks are governed by the law of the Netherlands and the Oost-Brabant Court, located in 's-Hertogenbosch, has exclusive jurisdiction to take cognizance of any disputes. You can find the full text of our general terms and conditions on our website: <https://www.geurtstrucks.com/terms-and-conditions>

## Accessoires