



+31 488 74 54 74
info@geurtsstrucks.com

Buskesdries 14
6673 DP,
Andelst
netherlands

Mercedes-Benz 8X4 + SERMAC 5Z42 BETONPOMP/BETONPUMPE/CONCRETE PUMP

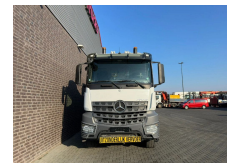
General-specifications

Id	1790026
Make	Mercedes-Benz
Type	8X4 + SERMAC 5Z42 BETONPOMP/BETONPUMPE/CONCRETE PUMP
Year	2019
Mileage	150.891 km
Construction	Concrete pump
Emissionclass	6

Technical-specifications

First registration date	02-01-2019
Fuel	Diesel
Transmission	Automatic
Vehicle identification number	6900
Axle configuration	8x4
Axle count	4
Weight	33.570 kg
Cylinder count	6
Wheelbase	540

€ On request



Extras

Air conditioning	LED lights
Air horn	Low-noise
Aluminium fuel tank	Media System
Anti-lock braking system	Navigation system
Central locking	Particulate filter
Central lubrication	PTO
Cruise control	Speed limiter
Electrically adjustable door mirrors	Stability control
Electrically operated windows	Toolbox
Heavy duty engine brake	Visor
Leaf spring suspension	