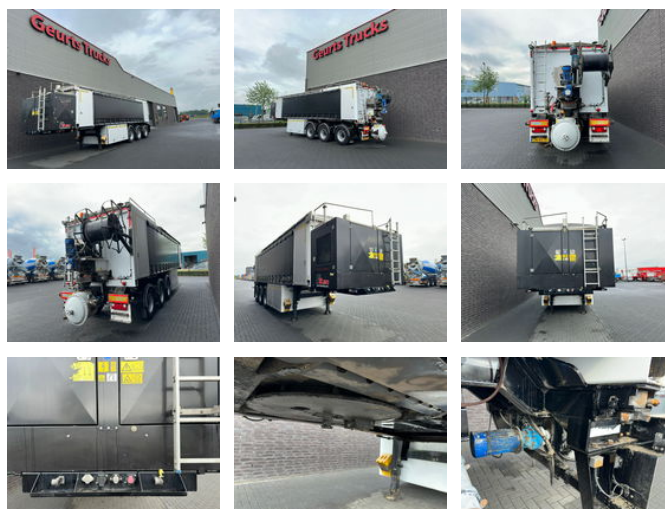




# Bremat F3.20 CEMENTDEKVLOER TRAILER/CHAPE/MORTEL/SCREEDPUMPS

## General features

Brand	Bremat
Subcategory	Concrete pumps
Licence plate	ON-89-TF
Construction year	2015
Date of first registration	05-05-2015
Color	Black
Condition	Used
General condition	Very good
Reference	1790114



## Characteristics

Empty weight	13.175kg
Load capacity	31.825kg
GVW	45.000kg
Length	1.224cm
Width	255cm
Serial number	0116

# Bremat F3.20 CEMENTDEKVLOER TRAILER/CHAPE/MORTEL/SCREEDPUMPS

## Technical specifications

Number of axes

3

## Description

BREMAT F3.20 CEMENT SCREED TRAILER HRD TRAILER WITH BREMAT F3.20 CEMENT SCREED SETUP 3 AXLES 2X STEERING AXLES 1X LIFT AXEL BPW ECO PLUS AXLES AIRSUSPENSION 2X REMOTE CONTROL BREMAT F3.20 Diesel Engine John Deere 4045TF290a, 5 cylinders Power: 56 kW (75 hp) at 2,400 rpm Fuel Tank Capacity: 490 L Compressor: 5,600 l/Min, 9 bar Generator: 19 kVA, 15 kW, 3,000 rpm Floor Mortar Pumping Capacity: Up to 6 m³/hour Mixer Kettle: 220 L Total Installation Length: 12,185 mm Sand Compartment Capacity: 20.0 m³ Cement Compartment Capacity: 6.0 m³ Water Tank Capacity: 200 L Empty Weight: 13,175 kg IMMEDIATELY AVAILABLE !!! [WWW.GEURTSTRUCKS.COM](http://WWW.GEURTSTRUCKS.COM) FOLLOW OUR INSTAGRAM, FACEBOOK AND TIKTOK TO WATCH OUR VIDEOS FROM OUR TRUCKS AND EQUIPMENT THAT WE HAVE FOR SALE WIR SPRECHEN DEUTSCH WE SPEAK ENGLISH HABLAMOS ESPANOL Geurts Trucks' general terms and conditions apply to all offers, quotations and agreements. All agreements with Geurts Trucks are governed by the law of the Netherlands and the Oost-Brabant Court, located in 's-Hertogenbosch, has exclusive jurisdiction to take cognizance of any disputes. You can find the full text of our general terms and conditions on our website: <https://www.geurtstrucks.com/terms-and-conditions>

## Accessories

- Anti-lock braking system
- Air suspension
- Lift axle
-