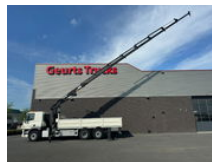
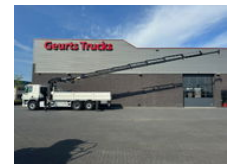




# DAF CF 330 6X2 MKG HLK 341 SHP A8 KRAAN/KRAN/CANE/GRUA

## General features

Brand	DAF
Model	CF 330
Subcategory	Crane truck
Odometer reading	359.670km
Date of first registration	20-10-2014
Hourmeter reading	159
Color	White
Condition	Used
General condition	Very good
Fuel	Diesel
Emission class	Euro 6
Reference	1790076
CE marking	Yes



## Characteristics

Empty weight	18.500kg
Serial number	3214
Lifting capacity	6.300kg
Lifting height	2.450cm
Mast type	Telescope

# DAF CF 330 6X2 MKG HLK 341 SHP A8 KRAAN/KRAN/CANE/GRUA

## Technical specifications

Number of axes	3
Axis configuration	6x2
Transmission	Automatic
Engine output	330hp

## Description

DAF CF 330 6X2 WITH MKG HLK 341 SHP A8 CRANE + WINCH + MAN BASKET EURO 6 L PAKKET 330 HP TRACTION 6X2 LAST AXEL IS LIFT AND STEERING AXEL FULL AIRSUSPENSION WHEELBASE 500 CM CF SLEEP CAB WITH AIRCO HEATER NAVI AUTOMATIC GEARBOX WITH ENGINE BRAKE LOTS TOOLBOXES OPEN LOADING PLATFORM WITH REMOVABLE SIDE BOARDS LENGTH 650 CM HOOKEYES MKG HLK 341 SHP A8 CRANE TOTAL 8X HYDRAULIC EXTENDABLE + 1X MANUAL OIL COOLER FOR CRANE HYDRAULIC 4X STABILZERS TOTAL RADIO REMOTE CONTROL MAX WORKING HIGH 2450 CM MAX LIFTING CAPACITY 6300 KG MAX LIFT CAPACITY ON 2090 CM 930 KG BIG HYDRAULIC WINCH WITH HOOKS AND ROLLERS FERRARI FAV 1080 MENBASKET 200 KG ONLY 159 CANE HOURS !!! WWW.GEURTSTRUCKS.COM FOLLOW OUR INSTAGRAM, FACEBOOK AND TIKTOK TO WATCH OUR VIDEOS FROM OUR TRUCKS AND EQUIPMENT THAT WE HAVE FOR SALE. WIR SPRECHEN DEUTSCH WE SPEAK ENGLISH HABLAMOS ESPANOL Geurts Trucks' general terms and conditions apply to all offers, quotations and agreements. All agreements with Geurts Trucks are governed by the law of the Netherlands and the Oost-Brabant Court, located in 's-Hertogenbosch, has exclusive jurisdiction to take cognizance of any disputes. You can find the full text of our general terms and conditions on our website: <https://www.geurtstrucks.com/terms-and-conditions>

## Accessories

- LED lights
- Media System
- 
- Anti-lock braking system
- Air conditioning
- Aluminium fuel tank
- Cruise control
- Electrically operated windows
- Low-noise
- Toolbox
- Air horn
- Air suspension
- Fog lights
- Navigation system
- PTO
- Particulate filter
- Sleeper cab
- Speed limiter
- Stability control

- Coupling
- Heavy duty engine brake
- Visor
- Electrically adjustable door mirrors