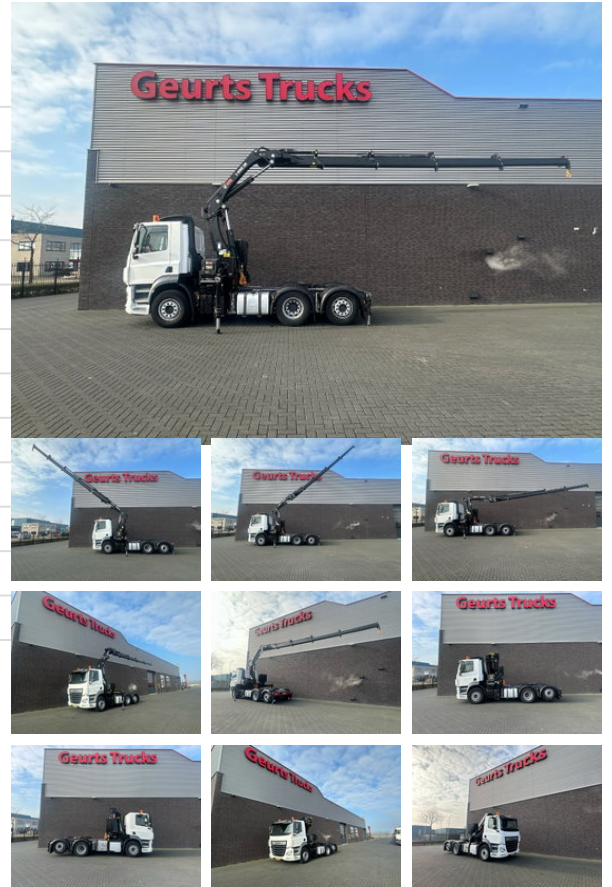




DAF CF 480 6X2 HIAB X-HIDUO 298 EP-4 KRAAN/KRAN/CRANE/GRUA

General characteristics

Brand	DAF
Model	CF 480
Subcategory	Crane truck
License plate	20-BKX-9
Meter reading	432.488km
Year of construction	2018
Date of first registration	26-09-2018
Hours displayed	169
Colour	Wit
Condition	Used
Fuel	Diesel
Emission class	Euro 6
Reference	1790240
CE marking	And



Properties

Single weight	13.120kg
Load capacity	14.880kg
GVW	28.000kg
Serial number	XLRTSM4300G214184
Max. lifting capacity	28.000kg
Lifting height	1.500cm
Mast type	Telescopic

Technical specifications

Number of axes	3
Axis configuration	6x2
Transmission	Automatic
Assets	355kw

Description

DAF CF480 6X2 + CRANE HIAB X-HIDUO 298 EP-4 TRACTOR UNIT EURO 6 480 HP DRIVE 6X2 LIMITED SLIP DIFFERENTIAL 9 TONS FOR AS WHEELBASE 340 CM AIR VEHICLE DAY CABINE AIRCO REVERSING CAMERA AUTOMATIC WITH ENGINE BRAKE TRACTOR VERSION HIAB X-HIDUO 298 EP-4 4 X HYDRAULIC TELESCOPIC 4 X SUPPORTS TOTAL WORKING HEIGHT 15 METERS MAX LIFTING CAPACITY 28.000 KG MAX LIFTING CAPACITY AT 12.5 METER 1860 KG RADIO REMOTE CONTROL WWW.GEURTSTRUCKS.COM FOLLOW US ALSO ON INSTAGRAM: GEURTSTRUCKS WE SPEAK DEUTSCH WE SPEAK ENGLISH HABLAMOS ESPANOL MÓWIMY PO POLSKI ROZMOWIAMY UKRAЇНСЬКОЮ

Accessories

- Anti-lock braking system
- Reversing camera
- Air conditioning
- Aluminium fuel tank
- Central locking
- Central lubrication
- Cruise control
- Electrically operated windows
- Toolbox
- Air suspension
- Fog lights
- PTO
- Particulate filter
- Speed limiter
- Visor
- Electrically adjustable door mirrors
- Intarder