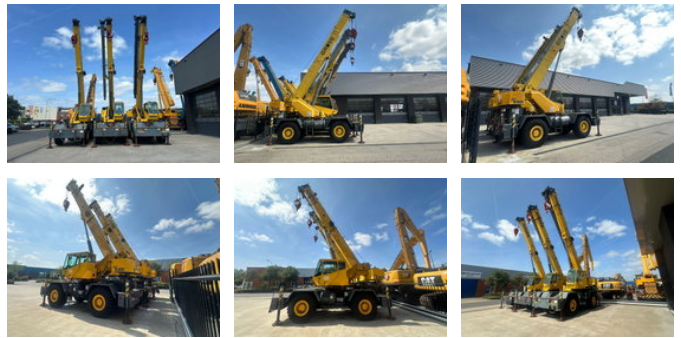




Grove RT 530E ROUGH TERRAIN CRANE

General characteristics

Brand	Grove
Subcategory	Rough terrain
Year of construction	2006
Colour	Yellow
Condition	Used
Fuel	Diesel
Reference	224775_223941_224774



Properties

Serial number

224775_223941_224774

Max. lifting capacity	30.000kg
Lifting height	2.600cm
Cylinder capacity	14.000cc
Mast type	Telescopic

Grove RT 530E ROUGH TERRAIN CRANE

Technical specifications

Drive	wheels
Assets	360hp

Description

3 x GROVE RT 530E ROUGH TERRAIN CRANE VIN: - 224775 - 223941 - 224774 Lattice Boom (Main Boom) Material: High-grade steel alloy Sections: 4-6 lattice sections, telescoping or fixed Maximum Length: 26 meters (85.30 feet) Section Dimensions: Base section: approx. 2-3 m (6.6-9.8 ft) wide across lattice Thickness: 12-15 mm (0.47-0.59 inches) Lifting Capacity: Up to 30 tons at radius of 10 meters Engine Model: Cummins NTA 855 or equivalent Type: 6-cylinder turbocharged diesel Displacement: 14.0 liters (854.84 cubic inches) Power Output: 330-360 HP at 2100 rpm Torque: Approximately 1,300 Nm (roughly 960 lbf-ft) Fuel Consumption: Varies depending on load (~20-30 L/hr during operation) Emission Standards: Meets Tier 2 or equivalent standards of the time Hydraulic System Main Pump: Variable displacement axial piston pump Flow Rate: Approx. 150-200 L/min (39.6-52.8 gpm) Operating Pressure: 280-320 bar (4061-4644 psi) Hydraulic Oil Capacity: 300-400 liters Hydraulic Cylinders: Boom extension/retraction: 2-4 high-capacity cylinders per section Outriggers: Equipped with independent cylinders, approx. 50-100 liters per cylinder Slewing: Hydraulic motor with planetary gears Winch Assembly Main Winch: Drum Capacity: 200-300 meters (660-990 ft) of wire rope Line Speed: Up to 80 m/min (262 ft/min) Auxiliary Winch: Capacity: 5-10 tons Line Speed: Approx. 50-70 m/min Outriggers Type: Hydraulic telescopic outriggers Span: Extend up to 7 meters (23 ft) per side Pads: Steel or rubber pads, adjustable for uneven terrain Hydraulics: 2-3 cylinders per outrigger Load Capacity: Designed to support crane load for safe operation at maximum capacity Rotational and Slewing System Slewing Bearing: Diameter: ~2.5 meters (8.2 ft) Material: High-strength alloy steel Torque: Up to 2000 kNm (approximate) Rotation Motor: Hydraulic motor providing smooth 360° rotation

Accessories