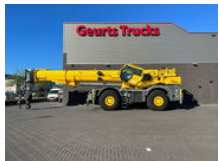




Grove RT8100 ROUGH TERRAIN CRANE

General features

| | |
|----------------------------|---------------|
| Brand | Grove |
| Subcategory | Rough terrain |
| Date of first registration | 05-06-2018 |
| Color | Yellow |
| Condition | Used |
| General condition | Very good |
| Fuel | Diesel |
| Reference | 1789850 |



Characteristics

| | |
|------------------|-----------|
| Empty weight | 54.073kg |
| Serial number | 802 |
| Lifting capacity | 100.000kg |
| Lifting height | 5.000cm |
| Mast type | Telescope |

Grove RT8100 ROUGH TERRAIN CRANE

Technical specifications

Drive

wheels

Description

GROVE GRT8100 ROUGH TERRAIN CRANE 100T lifting capacity 12 - 47 Mtr. five section boom, max. tip height 50 Mtr. 5 sheave hook block 81,5 Ton/12 Ton overhaul ball main & aux. 2x Winch, 4 hydr. telescopic outriggers, Manitowoc LMI and anti-two block system, 12,247 Kg counterweight hydr. removable, 29.5-25 tyres 85% remaining, CraneSTAR system. 6 cylinder turbocharged Cummins QSB6.7 engine with 275HP (205kW), EPA Compliant 6F-6R powershift transmission 4x4x4 configuration hydraulic tilt cab with A/C, CRANE HAVE ONLY 3415 WORKING HOURS !!!!! WE CAN SHIP WORLDWIDE!!!! WWW.GEURTSTRUCKS.COM FOLLOW OUR INSTAGRAM, FACEBOOK AND TIKTOK TO WATCH OUR VIDEOS FROM OUR TRUCKS AND EQUIPMENT THAT IS FOR SALE WIR SPRECHEN DEUTSCH WE SPEAK ENGLISH HABLAMOS ESPANOL Geurts Trucks' general terms and conditions apply to all offers, quotations and agreements. All agreements with Geurts Trucks are governed by the law of the Netherlands and the Oost-Brabant Court, located in 's-Hertogenbosch, has exclusive jurisdiction to take cognizance of any disputes. You can find the full text of our general terms and conditions on our website: <https://www.geurtstrucks.com/terms-and-conditions>

Accessories