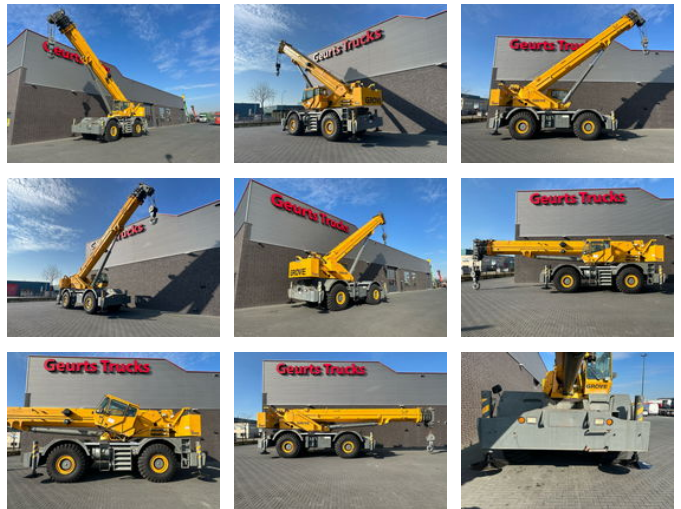




Grove RT890E ROUGH TERRAIN CRANE, CE-markering

General features

Brand	Grove
Subcategory	Rough terrain
Construction year	2008
Color	Yellow
Condition	Used
General condition	Very good
Fuel	Diesel
Reference	229976
CE marking	Yes



Characteristics

Empty weight	52.605kg
Serial number	229976
Lifting capacity	81.646kg
Lifting height	4.300cm
Mast type	Telescope

Grove RT890E ROUGH TERRAIN CRANE, CE-markering

Technical specifications

Drive

wheels

Description

GROVE RT 890E + 4X4 CRANE FIRST REG 2008 Dimensions: Boom Min Height @ Max Raise Angle 11.59m Max Height @ Max Raise Angle - No Jib 43.29m lattice extension 10m - 17m offsettable bifold lattice swingaway extension offsets 0gr ,20gr and 40gr. stows along side base boom section. maximum top height with jib 62.7m. Min Operating Radius 3.05m Max Elevating Angle 78degrees Max Operating Radius 38.1m Number Of Sections 5 Max Lift Capacity 81646.64kg Swing Speed 2rpm Transport Length 13979mm Transport Width 3340mm Transport Height 3758mm Wheelbase 4216mm Ground Clearance 337mm Width W/ Outriggers Extended 7315mm Carrier/Base Length 8569m Specifications: Engine umber Of Cylinders 6 Engine Make Cummins Gross Power 205kw EPA Power Measured @ 2500rpm Max Torque 987Nm Torque Measured @ 1500rpm Displacement 6.7L Aspiration turbocharged Operational: Operating Weight 52605.9kg Fuel Capacity 273L Hydraulic System Fluid Capacity 995L Operating Voltage 12V Tire Size 29.5x25 Transmission: Transmission Type full rangeshift Number Of Forward Gears 6 Number Of Reverse Gears 6 Max Speed - Forward 35km/h Max Speed - Reverse 35km/h PAT SYSTEM 2 WINCH 5 SHEAVE HOOKBLOCK 1 HEADACHE BALL HYDRAULIC TILTING CABIN FIRST REG. 2008 WIR SPRECHEN DEUTSCH WE SPEAK ENGLISH HABLAMOS ESPANOL

Accessories