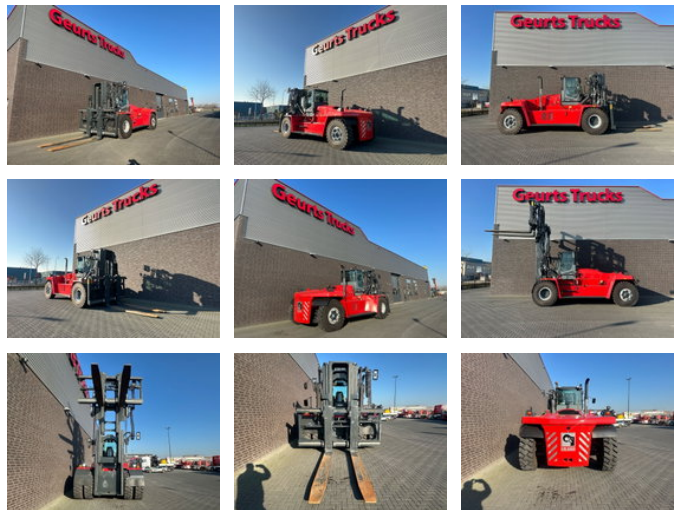




# Kalmar DCG 330-12 VORKHEFTRUCK/ GABELSTAPLER/ FORKLIFT

## General characteristics

Brand	Kalmar
Subcategory	Forklift
Year of construction	2023
Hours displayed	106
Colour	Red
Condition	Used
General state	Very good
Fuel	Diesel
Emission class	stage_4
Reference	1790247
CE marking	And



## Properties

Single weight	46.760kg
Cabin	Closed
Serial number	B20700648
Max. lifting capacity	33.000kg
Lifting height	500cm
Mast type	Triplex

Clearance height

370cm

# Kalmar DCG 330-12 VORKHEFTRUCK/ GABELSTAPLER/ FORKLIFT

## Technical specifications

Transmission	Automatic
--------------	-----------

---

Assets	185kw
--------	-------

## Description

KALMAR DCG 330-12 FORKLIFT TRIPLEX FULL FREE LIFT FORK SHAFT SYSTEM 33000KG AT 120CM SHORT WHEEL BASE = 475CM FORK L=300CM, B=30CM, THICKNESS =11CM FRONT & REAR CAMERA WHEEL AIR PRESSURE CONTROL CENTRAL LUBRICATE LED PACKAGE CHASSIS / BODY: • Towing pin • Steps with anti slip protection • Rear view mirror left and right side mounted on front mudguards • Strong and protective mudguards CABIN: • EGO Cabin • Clear and tempered panes of safety glass, thickness 6 mm • Clear windows incl. sliding windows in left and right door. • Complete doors with locks left and right side. • Complete manoeuvre system right hand console incl. light controls, toggle wheel for display, levers for load handling system (electric adjustable, 2-way's.) • Multi function lever left side incl. horn, turn signal. • Brake system with pedal left and right side. • Internal comfort incl. mirror, handles, interior lighting etc. • Wiper and washers front/rear and roof window. • Hydraulic steering system incl. electrically adjustable steering wheel in height-, manually adjustable laterally and longitudinally with steering wheel knob. • External reverse lights. • Cab tilting • Instep handle, left side • Automatic heat and ventilation (ECH) with fresh air inlet filter. • Speed control pedal right side. • Kalmar std Key system. • Cup holder • Coat hook • Colour display:- Fuel level, indicator.- Engine, transmission temperature.- Oil pressure engine.- Battery voltage.- Clock and date.- Hour meter.- Service time indicator.- Speed.- Engine speed (RPM).- Various information via pop-up.- AdBlue indicator STEERING SYSTEM: • Steering axel Kalmar, including double acting steering cylinder. DRIVETRAIN: • Drive axle Axletech HYDRAULICS • Electrical servo • Level sight glass on hydraulic oil tank • Variable pumps • High pressure filter • Automatic raised engine rpm when load handling function is used • Tilt angels std 5F/10B ELECTRIC SYSTEM: • Electrical system 24 V, • Rear lights and brake lights, LED. • Working lights on front mudguards, LED. • Working light mast 2 pcs. • Indicator lamps incl. hazard lights, LED.. • Main power switch WHEELS: • Michelin 16.00x25

## Accessories