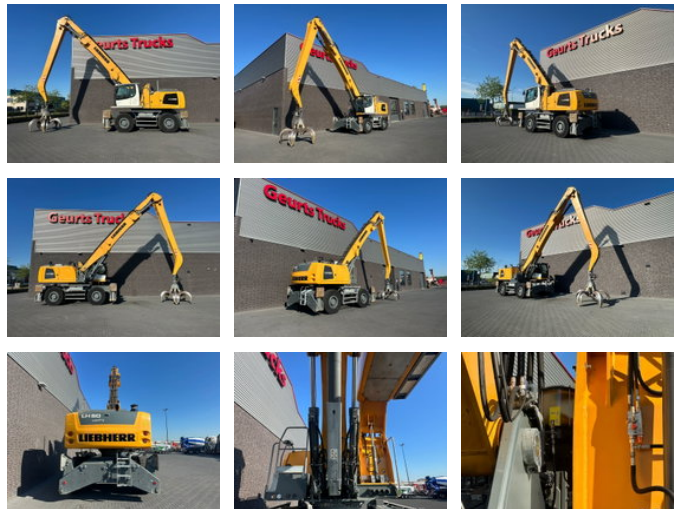




Liebherr LH 50 + GRAPPLE

General features

| | |
|-------------------|------------------|
| Brand | Liebherr |
| Subcategory | Material handler |
| Construction year | 2018 |
| Hourmeter reading | 11999 |
| Color | Yellow |
| Condition | Used |
| Fuel | Diesel |
| Reference | 1790711 |
| CE marking | Yes |



Characteristics

| | |
|---------------|-------------------|
| GVW | 46.000kg |
| Serial number | WLHZ1216EZK105733 |

Liebherr LH 50 + GRAPPLE

Technical specifications

| | |
|---------------|--------|
| Drive | wheels |
| Engine output | 155kw |

Description

LIEBHERR LH 50 M LITRONIC MATERIAL HANDLER YEAR 2018 TOTAL WEIGHT 46.000 KG REACH M CE MACHINE ENGINE D934 A7-04 POWER OUTPUT 155KW / 210 HP WHEELBASE CM GROUND CLEARANCE 47,5CM UNDERCARRIGE WIDTH 353CM 4 POINT OUTRIGGERS HYDRAULIC ELEVATING CABIN 3TH AND 4TH HYDRAULIC LINES INDUSTRIAL STRAIGHT MONOBOOM INDUSTRIAL STICK, STICK-END SHARPLY ANGLED 5 TIN GRAPPLE MULTI-TINE GRAB CAPACITY 1.10-1.70M3 CRANE IS READY FOR WORK WIR SPRECHEN DEUTSCH WE SPEAK ENGLISCH HABLAMOS ESPANOL

Accessories