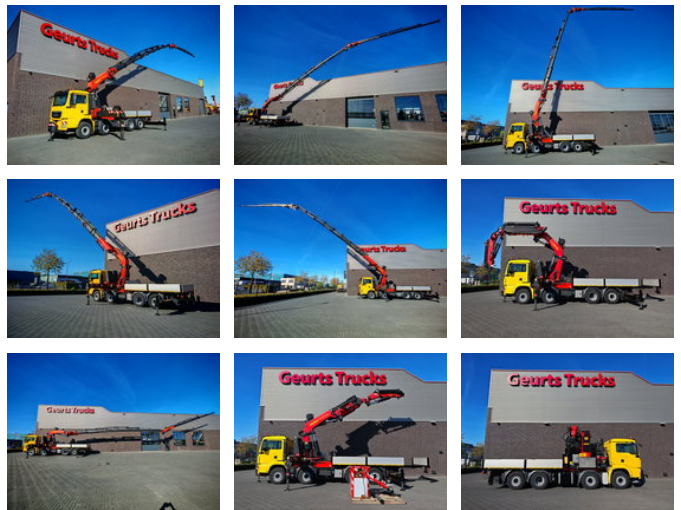




MAN TGS 35.480 8X4 H +PALFINGER PK 110.002 SH.G + PJ 170 E KRAAN/KRAN/GRUA

General features

Brand	MAN
Model	TGS 35.480
Subcategory	Crane truck
Odometer reading	219.409km
Date of first registration	10-06-2014
Hourmeter reading	10929
Color	Yellow
Condition	Used
General condition	Very good
Fuel	Diesel
Emission class	Euro 5
Reference	1790693
CE marking	Yes



Characteristics

Empty weight	27.625kg
GVW	36.000kg
Lifting capacity	30.000kg
Mast type	Telescope

MAN TGS 35.480 8X4 H +PALFINGER PK 110.002 SH.G + PJ 170 E KRAAN/KRAN/GRUA

Technical specifications

Number of axes	4
Axis configuration	8x4
Transmission	Manual
Engine output	480

Description

EURO 5 L PACKAGE 480 HP DRIVE 8X4H-6 BL WHEELBASE 480CM BROAD / AIR SUSPENSION DAY CAB WITH AIR CONDITIONING, REFRIGERATOR MEDIA, TELEPHONE PREPARATION MANUAL TRANSMISSION TRAILER COUPLING FRONT AND REAR LIGHTS TOOLBOX LOAD BED DIMENSIONS L=465CM + 155 EXTENDABLE , W=247CM PALFINGER PK 110002 SH G +PJ 170 E 14 X HYDRAULICLY EXTENDABLE PALFINGER WINCH TOTAL 5 X STAMPED CRANE CAN OPERATE IN FRONT OF CAB VIA 1 X FRONT STAMPING RADIOGRAPHIC REMOTE CONTROL MAX LIFT CAPACITY AT 4.3M 20,400 KG MAX WORKING HEIGHT 36M CRANE IS EQUIPPED WITH ORIGINAL WORK PLATFORM WWW.GEURTSTRUCKS.COM FOLLOW US NOW ON INSTAGRAM: GEURTSTRUCKS

Accessories

- Trailer coupling
- Differential Lock
- Rotating beacon
- Reversing camera
- Air conditioning
- Electrically operated windows
- Low-noise
- Toolbox
- Air suspension
- Fog lights
- PTO
- Coupling
- Spotlights
- Visor