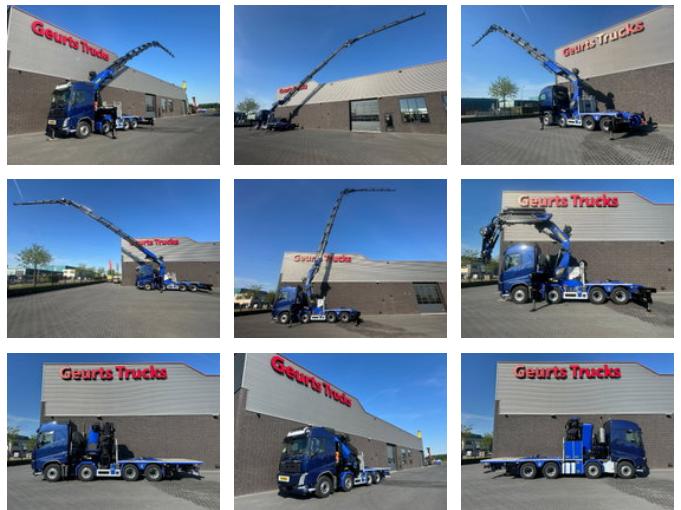




# Volvo FH 540 8X4 TREKKER / BAKWAGEN MET PALFINGER PK135.002 TEC7 + JIB PJ190 KRAAN / KRAN / CRANE / GRUA

## General characteristics

Brand	Volvo
Model	FH 540
Subcategory	Crane truck
Meter reading	121.734km
Date of first registration	16-08-2018
Hours displayed	6453
Colour	Blue
Condition	Used
General state	Very good
Fuel	Diesel
Emission class	Euro 6
Reference	822934
CE marking	And



## Properties

Single weight	30.075kg
Load capacity	10.925kg
GVW	41.000kg
Serial number	YV2RT60G8JA822934
Max. lifting capacity	30.000kg
Lifting height	3.600cm

Mast type

Telescopic

# Volvo FH 540 8X4 TREKKER / BAKWAGEN MET PALFINGER PK135.002 TEC7 + JIB PJ190 KRAAN / KRAN / CRANE / GRUA

## Technical specifications

Number of axes	4
Axis configuration	8x4
Transmission	Automatic
Assets	405kw

## Description

VOLVO FH540 8X4 TRACTOR UNIT / TRUCK WITH PALFINGER PK135.002 TEC7 + JIB PJ190 CRANE EURO 6 L PACKAGE 540 HP 8X4 DRIVE WHEELBASE 460 CM STEEL / AIR SUSPENSION FH SLEEPER CAB WITH AIR CONDITIONING, FRIDGE NAVIGATION SIDE VIEW CAMERA I-SHIFT GEARBOX VOLVO ENGINE BRAKE SLIDING 5TH WHEEL VBG TRAILER COUPLING TOOLBOX PALFINGER PK135.002 TEC7 + JIB PJ190 CRANE CRANE WORKING HOURS 6453 14 X HYDRAULIC EXTENDIBLE OIL COOLER FOR CRANE HYDRAULICS WINCH 5 X OUTRIGGERS RADIO REMOTE CONTROL MAX LIFTING CAPACITY 30000 KG MAX LIFTING CAPACITY AT 4,5M 22100 KG MAX LIFTING CAPACITY AT 32.00M 1280 KG WORKING HEIGHT 36.00 METRES

## Accessories

- Anti-lock braking system
- Air conditioning
- Aluminium fuel tank
- Central lubrication
- Cruise control
- Electrically operated windows
- Toolbox
- Refrigerator
- Alloy wheels
- Air suspension
- Fog lights
- Navigation system
- PTO
- Particulate filter
- Sleeper cab
- Speed limiter
- Coupling
- Heavy duty engine brake
- Spotlights
- Visor
- Electrically adjustable door mirrors