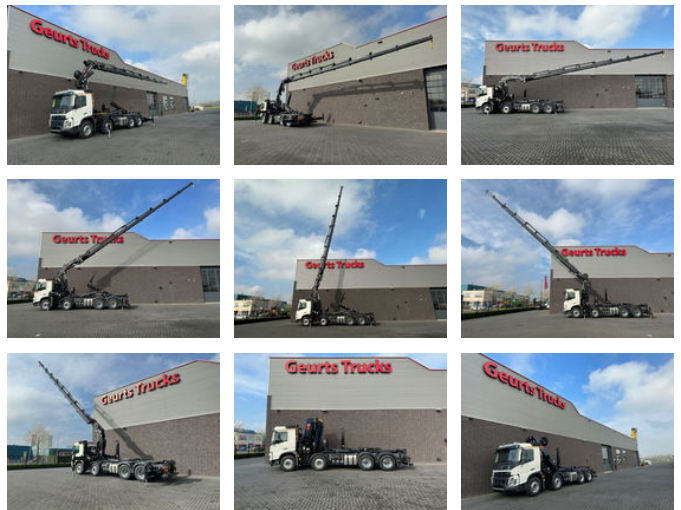




# Volvo FMX 500 8X4 HIAB HAAKARM + HIAB 548 E-8 KRAAN/ KRAN/CRANE/GRUA

## General features

Brand	Volvo
Model	FMX 500
Subcategory	Crane truck
Odometer reading	493km
Date of first registration	12-06-2024
Hourmeter reading	1
Color	White
Condition	Used
General condition	Very good
Fuel	Diesel
Emission class	Euro 6
Reference	1789745
CE marking	Yes



## Characteristics

Empty weight	21.160kg
Serial number	8548
Lifting capacity	18.000kg
Lifting height	2.200cm
Mast type	Telescope

# Volvo FMX 500 8X4 HIAB HAAKARM + HIAB 548 E-8 KRAAN/ KРАН/CRAНЕ/GRUA

## Technical specifications

Number of axes	4
Axis configuration	8x4
Transmission	Automatic
Engine output	500hp

## Description

NEW VOLVO FMX 500 8X4 WITH HIAB OPT25S56 HOOKLIFT SYSTEM + HIAB X-HIPRO 548 E-8 CRANE EURO 6 L PAKKET 500 HP TRACTION 8X4 HUB REDUCTION STEELSUSPENSION WHEELBASE 510 CM NEW MODEL FMX CAB WITH AIRCO AUTOMATIC GEARBOX WITH ENGINE BRAKE ALCOA FELGEN HIAB 25 TON HOOKLIFTSYSTEM TYPE: OPT25S56 TELESCOPIC REAR BUMPER HIAB X-HIPRO 548 E-8 CRANE 8X HYDRAULIC EXTENDABLE RADIO REMOTE CONTROL EXTRA HYDRAULIC FUNCTIONS ( 5th AND 6th FUNCTION) MAX LIFTING CAPACITY 18.000 KG MAX WORKING HIGH 2200 CM MAX LIFTING CAPACITY ON 1960 CM 1720 KG 4X STABILZERS NEW BUILT IN 2023 !!! 2 PIECES IN STOCK !!!  
WWW.GEURTSTRUCKS.COM FOLLOW OUR INSTAGRAM: GEURTSTRUCKS WIR SPRECHEN DEUTSCH WE SPEAK ENGLISH HABLAMOS ESPANOL Geurts Trucks' general terms and conditions apply to all offers, quotations and agreements. All agreements with Geurts Trucks are governed by the law of the Netherlands and the Oost-Brabant Court, located in 's-Hertogenbosch, has exclusive jurisdiction to take cognizance of any disputes. You can find the full text of our general terms and conditions on our website: <https://www.geurtstrucks.com/terms-and-conditions>

## Accessories

- LED lights
- 
- Anti-lock braking system
- Air conditioning
- Aluminium fuel tank
- Leaf spring suspension
- Cruise control
- Electrically operated windows
- Low-noise
- Alloy wheels
- Air horn
- Fog lights
- Navigation system
- PTO
- Particulate filter
- Side skirts
- Speed limiter
- Stability control
- Heavy duty engine brake
- Visor

- Electrically adjustable door mirrors